

Content Software Financial Data Explorer



The “Content Software Financial Data Explorer“ (CSFDE) is a reporting and analysis tool. As “stand alone“ product it further is a supplement to the client product “Content Software Workbench“ (CSW). The CSFDE allows fast and easy access to all data, ratios and search results in the “Content Software Repository“ (CSR) through an intuitive and comfortable graphical interface. Wizards help you to generate complex data queries in only a few steps.

This product provides flexible access to the entire data content of companies, financial instruments, sectors, peer groups and economies. This means an ideal and overall support of the investment research production processes.

User groups of associated banking areas can use the CSFDE as “stand alone“ product and so easily analyze and process search results.

The CSFDE is based on the server product “Content Software Repository“ developed by Content Software.

The benefits to you

The CSFDE offers:

- Fast access to latest data and ratios of all companies, financial instruments, sectors, peer groups and economies with minimum effort and a comfortable user interface.
- Flexible data and ratio queries through user friendly wizards. All information associated to the required data, such as master data, all common reporting and time periods can be used as search criteria. In respect to numerical values you have all relational operators (e.g. >, <, =, etc.) in combination with logical operators at your disposal.
- The generation of directly comparable search results through integrated currency conversion.
- Processing of the search results in MS Excel.
- The generation of dynamic results on the basis of the Content Software Workbench functions provided in the “Content Software Workbench“.
- The generation of private reports for individual users (generated queries are saved in protected areas).
- The generation of public reports for all users (report library) (generated queries are saved in open areas).
- Fast and direct access to the report library with MS Excel.

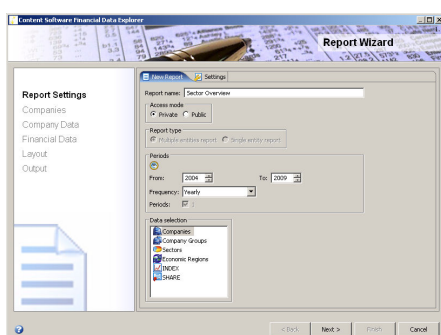
Areas of functionality

The CSFDE provides three main areas of functionality:

- **Report definition** for the generation of new reports with the help of wizards.
- **Report management** for an overview of the user specific and public report libraries and the possibility to edit existing reports.
- **Report quick-start** for the direct access to existing reports in MS Excel.

Report definition

The report definition allows you to define the search criteria for the data and ratios. A wizard guides you through this process. You can define report parameters such as report name or type. In a second step you define the entities and report periods. You can also use relational operators to reduce the data volume and combine data. You further define the report layout and formatting.



Cap. 1: Wizard for the definition of report parameters

The CSFDE knows two report types:

- Single entity reports
- Multiple entity reports

A “single entity report“ contains data and ratios of one entity (company, sector, etc.). A “multiple entity report“ contains data and ratios of one or more entities. In a “single entity report“ you can define, whether you require the data as such in MS Excel or you want them to be displayed as Content Software Workbench functions. The latter delivers a dynamic report result. This can be used as a dynamic report without the CSFDE through simply altering the functional parameters.

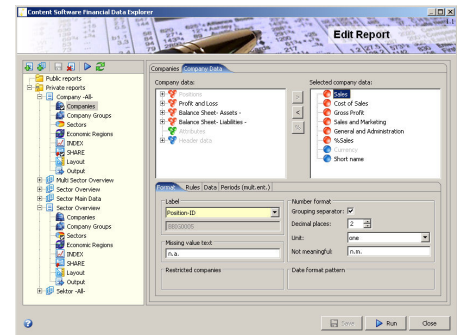
Report management

The report definition can – before or after the report generation – be stored for re-use or editing purposes. The report management classifies two report categories:

- “Private reports” are only visible for the report producer and can only be edited or executed by the producer.
- “Public reports” can be generated and edited by authorized users only. Execution of and access to the report is possible for any user.

Report quick-start

All reports can be started via the report quick-start. On the basis of the report name (MS Excel Range) you can start the function “Run Report” in the menu or the command bar and directly run a report. The function “Edit Report” allows you to open and edit a report definition directly.



Cap. 2: The report management

Architecture

The CSFDE is implemented in a modern multi-layer architecture and based on standard software packages. The architecture and standard software comply with the requirements of most IT departments. All functions are delivered in the COM-standard which ensures an easy integration into the Microsoft environment. The entire business logic has been transferred to the server (using Enterprise Java Beans) and is run on a scalable application server. A standard Java Com bridge connects the Com and Java objects. The user surfaces have been realized with Java and SWT (Standard Widget Toolkit).

Contact:

Content Software GmbH
Benzstraße 1
D-61352 Bad Homburg
Phone.: +49 6172 662621-0
Fax: +49 6172 662621-99

Internet: <http://www.content-software.com>
E-mail: kontakt@content-software.com