

# Content Software Document Explorer



The "Content Software Document Explorer" (CSDE) provides authorised users with documents and publications that have been stored in the Content Software Repository (CSR) for purpose of analysis and further utilisation. Thus, this product ideally complements the continuous support of business processes through the Content Software Workbench by granting flexible access to documents and publications containing up-to-date work results.

The CSDE allows quick access to up-to-date documents and publications, a flexible search function for all document attributes stored in the CSR and even the option of a full text document search.

The Content Software Document Explorer does not need a client installation and can be used via a web browser.

## Your benefit

The Content Software Document Explorer provides the following advantages:

- quick access to up-to-date documents and publications – hereby the view of the CSDE of the entire document stock can be configured and eventually be restricted (e.g. only PDF documents of a defined document type can be displayed)
- flexible search for documents stored in the CSR; search criteria include all data linked to the document such as companies, branches, languages and document types
- full text document search
- storing of search queries (filter) by the user

## Functional areas

The Content Software Document Explorer has three main functional areas:

- standard search
- advanced search
- filter management

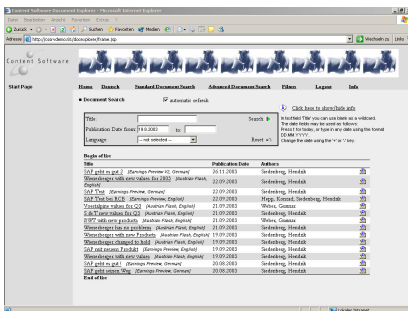


Fig. 1: Standard Document Search

## Standard Search

After login the user has direct access to the "Standard Search." The search modalities include the search via title, publication date and language. Additionally, the following functions are available:

- you can open single documents that occur in the result list via mouse click
- the document will be displayed with the respective viewer (e.g. Acrobat Reader for "PDF", Word for "DOC")
- you can directly attach a document of the result list to an e-mail and send it with just one mouse click
- the option "Automatic Refresh" automatically repeats the search in configurable intervals; thus the display of the results continuously remains up-to-date in an opened application

## Advanced Search

The "Advanced Search" of the CSDE allows the user to restrict the search by using the document attributes stored in the CSR and combine any of them.

Possible attributes are:

- title, publication date (from – to)
- language, document type, format
- author, company, sector, region

A full text search in combination with the above mentioned search via document attributes is also possible.

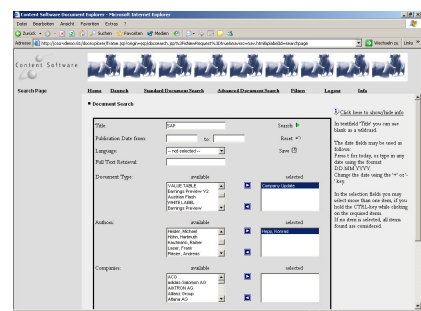


Fig. 2: Advanced Document Search

## Filter management

All queries of the "Advanced Search" can be stored as a filter in the system and directly be executed via the function "Filter." Existing filters can be modified and old filters can be removed from the system. Administrators also have the possibility to create so called "Public Filters" that can be used by all CSDE users.

## Architecture

The Content Software Document Explorer is based on the following components:

- the data access layer that gives access to the CSR data
- the data cache to rapidly access frequent data queries
- the connection pool to buffer database connections for a good performance at peak times

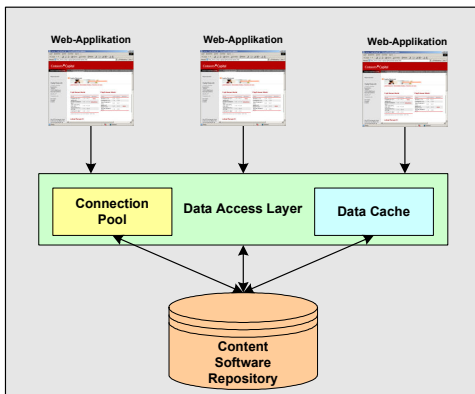


Fig. 3: Technical Architecture

### Data access layer

The data access layer manages all web page accesses to the Content Software Repository data.

### Data cache

The data cache stores all data that should not be accessed via the database for performance reasons. The actualisation period for the single data cache elements can be sophisticatedly configured.

### Connection pool

The connection pool checks all access rights to the Content Software Repository. Furthermore the connection pool stores a variable number of database connections. That guarantees the necessary performance at peak times.

## System requirements

In order to use the Content Software Document Explorer you need the Microsoft Internet Explorer Version 5.0 or higher. On the server side you need - besides the "Content Software Repository" - a web server (e.g. Apache) including servlet engine (e.g. Tomcat) or a common application server (e.g. JBoss).

## Contact:

**Content Software GmbH**  
**Benzstr. 1**  
**D-61352 Bad Homburg**  
**Phone: +49 6172 662621-0**  
**Fax: +49 6172 662621-99**

**Internet: <http://www.content-software.com>**  
**e-mail: [kontakt@content-software.com](mailto:kontakt@content-software.com)**