

Content Software Distribution System



“Content Software Distribution” is a product package and covers processes necessary for the management and fully automated distribution of documents, publications and financial data that come up in the various business processes of financial service companies.

You can manage all documents and publications in a document management system that is fully integrated into Microsoft Office (Excel, Word). This management system also provides the basis for a structured document search with all search categories common in the financial sector or even via full text search.

Furthermore, a fully automated distribution of documents, publications and financial data is possible. In order to ideally control the distribution, the package contains a “Client Management Module” where the distribution to internal and external clients can be sophisticatedly regulated, controlled and supervised. Besides the automated, parameter-driven distribution via e-mail, this module also manages the distribution to external distributors (e.g. Bloomberg, Multex) or internal systems (e.g. content management systems such as Vignette).

The entire distribution process of the “Content Software Distribution“ package also fulfils the requirements of § 34b Wertpapierhandelsgesetz (WpHG – German Securities Trading Law).

The components

The “Content Software Distribution System“ contains the following components:

- a document management system integrated into Microsoft Office for the management of all documents
- a “Client Management Module“ for the administration and maintenance of client data and profiles with respect to the distribution of documents, publications and financial data
- a module for the automated, parameter-driven distribution of documents, publications and financial data (e.g. e-mail, FTP) to internal or external clients

Document management system

This module offers a document management system entirely integrated into Microsoft Office (Excel, Word) for the administration of all documents. The following user actions are supported:

- editing (storing, changing, deleting, versioning) of documents in all common document formats (e.g. Word, Excel, Acrobat Reader)
- assignment of relevant financial sector attributes to the documents
- subject catalogue consisting of individually defined key words
- document search via key words and attributes
- full text document search
- document release for publication (dual control)
- Process automation for document conversion (e.g. conversion into PDF, automatic layout adaptation in MS Office) with software of third suppliers

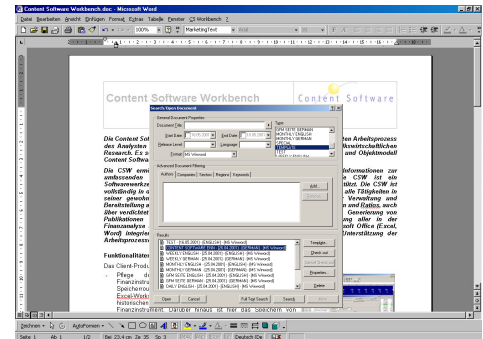


Figure 1: Dialogue in the document management system

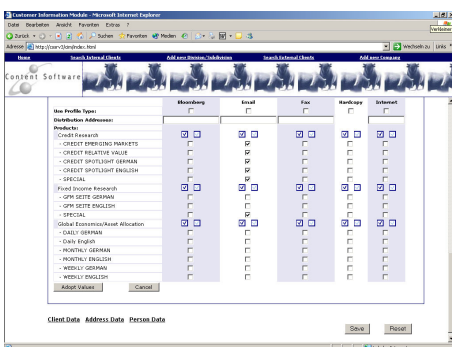


Figure 2: Dialogue in the Client Management Module

Client Management Module

This module manages and maintains client data and profiles with respect to the distribution of documents, publications and financial data. The module is implemented as a dynamic web application. The distribution to internal and external clients can be specifically regulated, controlled and supervised. The module supports the following user actions:

- comfortable search for internal and external clients within the client data
- management and maintenance of internal and external client master data
- management and maintenance of client profiles with respect to the distribution of documents and information

Module for the automated, parameter-driven distribution

This module is responsible for the automatic distribution of documents, publication and financial data to internal or external clients and fully records this process. The distribution processes thus also fulfil the requirements of § 34b Wertpapierhandelsgesetz (WpHG – German Securities Trading Law). The distribution is regulated through the settings of the client profiles in the Client Management Module and further distribution rules on the basis of XML. These rules contain as control elements the document types or groups of document types, the status (draft, final, released, etc.) or the technical format of the documents and publications (Microsoft Word/Excel, PDF files, text files, etc.). The module contains the following components:

- control and management of the document distribution based on client profiles and distribution rules
- a module for the automated e-mail distribution of documents and publications also in combination with additional financial data (e-mail publisher)
- the Command Execution Module to call up external processing or distribution programmes of your choice, e.g. fax server, chat applications or content management systems
- Adapter for the distribution of research information to the distributors Bloomberg and Multex

Architecture

All system components have been implemented within a modern multi-layer architecture and are to a great extent based on the deployment of standard software. Our architecture and standard software used is in most cases identical with the guidelines and standards of modern IT-departments. All features provided correspond with the COM standard so that the integration into the Microsoft environment is guaranteed. With Enterprise Java Beans the entire business logic has been swapped-out to the server and is operated directly in an Oracle database or a scalable application server – according to the different performance and scalability requirements. The link between COM and Java objects is realised through a customary Java-COM bridge. The document management system – being equally integrated into Microsoft Office – is located on the server and run by the Content Software File Store.

Contact:

Content Software GmbH
Benzstr. 1
D-61352 Bad Homburg
Phone: +49 6172 662621-0
Fax: +49 6172 662621-99

Internet: <http://www.content-software.com>
e-mail: kontakt@content-software.com